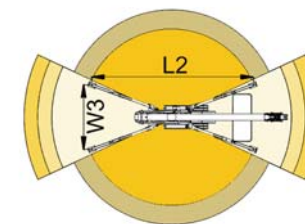
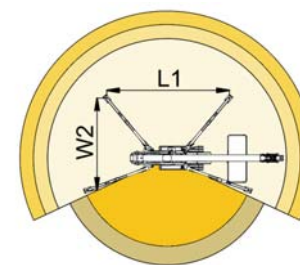
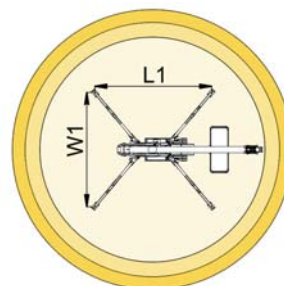
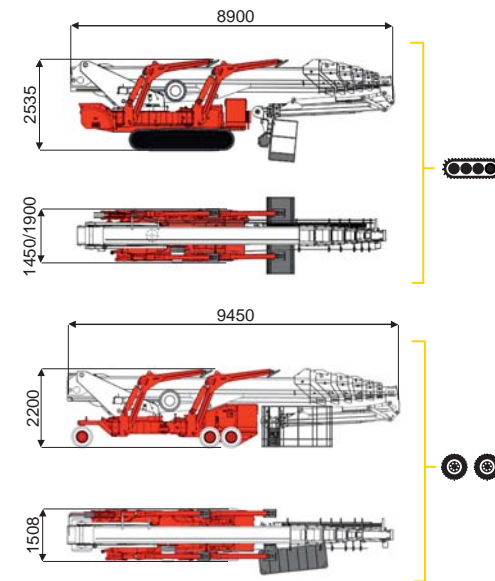
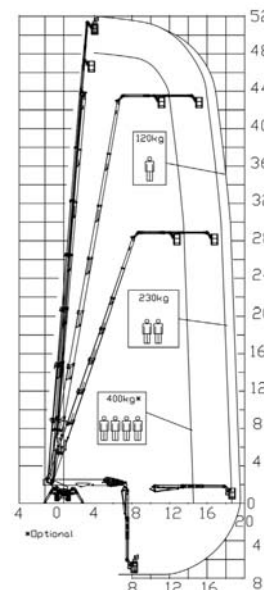




52 m ↑  
19,5 m →  
400 Kg\* 🧑🧑🧑



16,5 m	18,5 m	19,5 m	14,5 m	16,5 m	L1	L2	W1	W2	W3
400 kg*	230 kg	120 kg	400 kg*	120/230 kg	6460 mm	7190 mm	5170 mm	4655 mm	4130 mm

BI-ENERGY  
Diesel+AC



XTJ 52+/C	🔋	52 m	19,5 m	400 kg*	170°	660°	240x70 cm	90°+80°	4,13-5,17 m	16%	42%	2 km/h	14000 kg	95 kN	4,19 kN/m <sup>2</sup>	6,56 kN/m <sup>2</sup>
XTJ 52+/R	⊙ ⊙	52 m	19,5 m	400 kg*	170°	660°	240x70 cm	90°+80°	4,13-5,17 m	16%	16%	1,2 km/h	13000 kg	95 kN	3,89 kN/m <sup>2</sup>	5,73 kN/m <sup>2</sup>

Available version:

- BI-ENERGY (DIESEL+AC)
- ECO (DC+AC)
- HYBRID (DIESEL+DC)

Characteristics and technical data are informative only and subjected to change without notice.