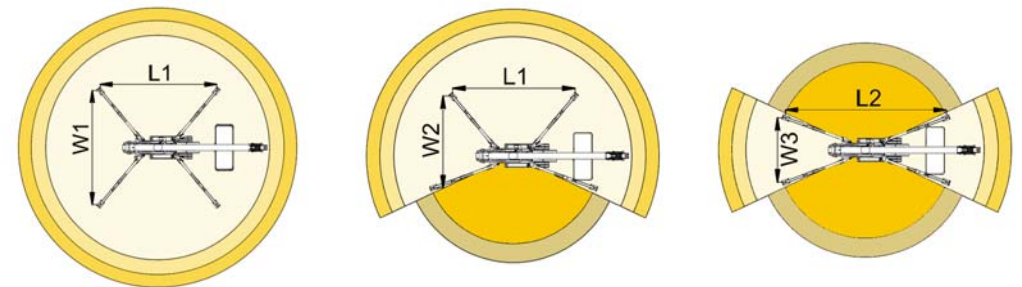
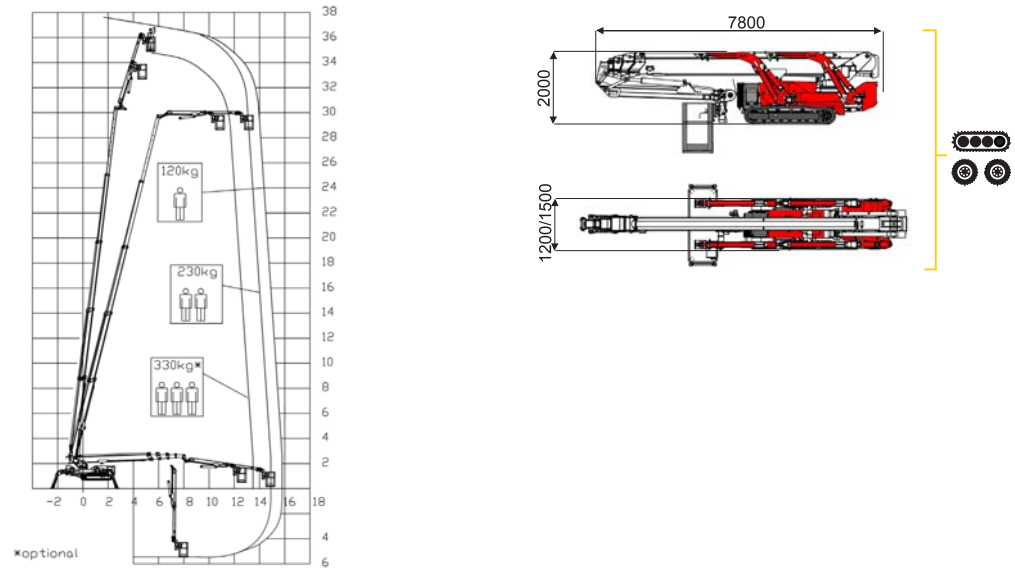




37 m ↑
15,7 m →
330 Kg* 👤👤👤



13,5 m	15 m	15,7 m	7,2 m	9,5 m	L1	L2	W1	W2	W3
330 kg*	230 kg	120 kg	330 kg*	120/230 kg	5535 mm	7160 mm	5260 mm	3975 mm	2680 mm

BI-ENERGY
Diesel+AC



XTJ 37+/C-R	🔋	🌐	37 m	15,7 m	330 kg*	170°	660°	180x70 cm	90°+80°	2,68-5,26 m	23%	36%	2,5 km/h	7500 kg	55 kN	2,58 kN/m ²	5,34 kN/m ²
--------------------	---	---	------	--------	---------	------	------	-----------	---------	-------------	-----	-----	----------	---------	-------	------------------------	------------------------

Available version:

- BI-ENERGY (DIESEL+AC)
- ECO (DC+AC)
- HYBRID (DIESEL+DC)

Characteristics and technical data are informative only and subjected to change without notice.