

SG900D



PICK AND CARRY CRANE

International brand, EU standard

Intelligent, safe and more durable

PICK AND CARRY CRANE

SG900D



- Max lifting height 10.3mX1.5t

Capacity 9t×0.7m



- Working radius 8.5m×0.5t

- Weight 9000kg



HENAN SPT MACHINERY EQUIPMENT CO.,LTD

www.sptcrane.com



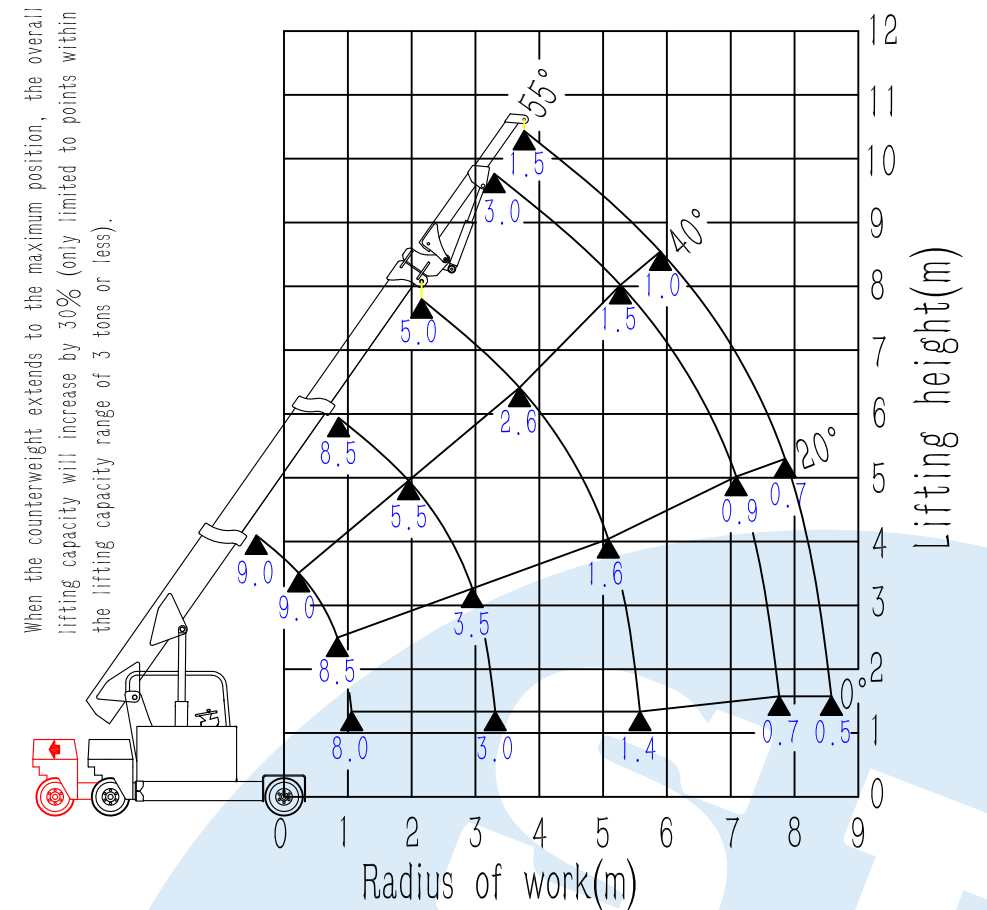
Working Range Chart

SG900D Load Chart

Weight: T

Technical Information

Model	SG900	
Capacity	9t × 0.7m	
Working radius	8.5m × 0.5t	
Max lifting height	10.3mX1.5t	
Winch device	Hook speed	0-8m/min (4 fall)
	Rope type	Φ10mm × 80m
Telescopic system	Boom form	3+2 sections
	Boom length/Time	5.6m-10.9m/60sec
Up and downs	Boom angle/Time	-5°-55°/50sec
Travel system	Walking way	Hydraulic
	Speed	0-8km/h
	Grade ability	Without load 5.7°(10%) ,With load-2.9°(5%)
	Rear wheel (Drive,steering)	2 x 6.50 R10" (Pneumatic)
	Front wheel (Bearing wheel)	4 x 21x8-R9" (Solid)
Diesel engine	Turning radius	3.62m
	Model	4TNV88 (Yanmar)
	Type/Displacement	4 cylinder/2.19L
	Rated output	29.1kw/2400min-1
	Starting method	Electric
	Operating temperature	-5° C-40° C
	Fuel/Volume	Diesel/60L
	Battery capacity	12V 90AH
	Fuel consumption	239g/kW-h
	Sound level	Rated speed ≤ 93dBA (1m)
	Emission standard/Altitude	EPA4/EU5/China Tier 4/1200m
Operate system	Type of operation	Steering wheel+Universal handel/Remote
	Operate characteristic	Proportional
Dimension	Length × Width × Height	4900mm × 1800mm × 2500mm
Weight	With optional device	9000kg



Transport Dimensions

